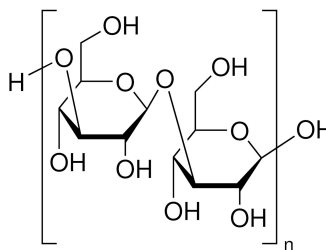
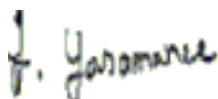


# Certificate of Analysis

**Product Name :**  $\beta$ -D-Glucan from barley for use with Total Dietary Fiber Control Kit, TDF-C10  
**Product Number :** G7391-1G  
**Batch Number :** 0000497998  
**Source Batch :** 0000429103  
**CAS Number :** 9041-22-9  
**MDL Number :** MFCD00466918  
**Storage Temperature :** +2°C to +8°C  
**Quality Release Date :** 15 Apr 2025



Test	Specification	Result
Suitability	Suitable	Suitable
Suitable for use in determination of total dietary fiber as outlined in Sigma Technical Bulletin TDFAB-2		



Jagodige Yasomanee, Supervisor

Quality Assurance

St. Louis, Dekalb

US

Sigma-Aldrich warrants, that at the time of the quality release or subsequent retest date this product conformed to the information contained in this publication. The current Specification sheet may be available at [Sigma-Aldrich.com](http://Sigma-Aldrich.com). For further inquiries, please contact Technical Service. Purchase must determine the suitability of the product for its particular use. See reverse side of website or packing slip for additional terms and conditions of sale

Version Number: 01 Doc: 1249604

Page 1 of 1

