

Certificate of Analysis

Product Name:

Poly(L-lactide) - average M_n 40,000

Product Number:

94829

Batch Number:

MKCV3316

Brand:

ALDRICH

CAS Number:

26161-42-2

MDL Number:

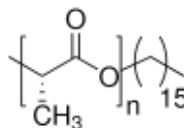
MFCD00166383

Formula Weight:

67,000 g/mol

Quality Release Date:

11 JUL 2024



Test	Specification	Result
Appearance (Color)	White to Light Yellow and Faint Beige to Light Beige	White
Appearance (Form)	Powder or Crystals or Fibers or Chunk(s)	Chunk(s)
Melting Point		171 °C
Specification: Report Results		
Proton NMR Spectrum	Conforms to Structure	Conforms
Molecular Number by HNMR	28000 - 52000	30537

Larry Coers, Director
Quality Control
Milwaukee, WI US

Sigma-Aldrich warrants, that at the time of the quality release or subsequent retest date this product conformed to the information contained in this publication. The current Specification sheet may be available at Sigma-Aldrich.com. For further inquiries, please contact Technical Service. Purchaser must determine the suitability of the product for its particular use. See reverse side of invoice or packing slip for additional terms and conditions of sale.

